

RUNWAY



Bristol Bridge

EAST

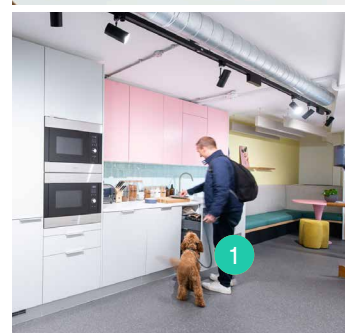
HI THERE.

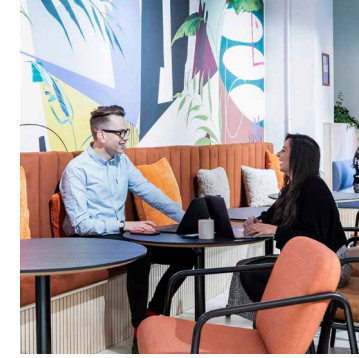
Fighting boring offices since 2014.

We're relentless when it comes to making our teams happy. Can't stop, won't stop. That's why over 3,500 ambitious members across the country love us.

Customised private offices, flexible coworking spaces and everything in between — all sorted for you with zero faff.

Limber up at Run Club. Delight in dogs on demand. Go nuts on Cake Wednesday. Don't organise any of it. Bliss.





WHAT WE DO



Team Bliss

We create countless moments to make your team happy all day, every day. Enjoy an unrivalled collection of team perks and events to boost your careers page — all sorted by our on-site dream team.



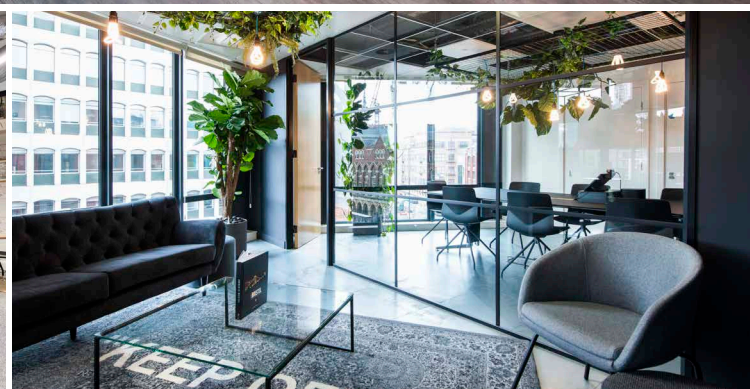
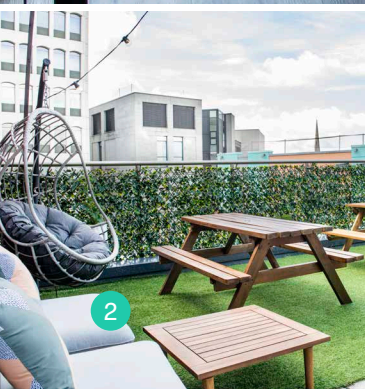
Space to Scale

Bask in beautiful, customisable office space, where stuff gets fixed by people who care. All under membership plans as flexible as I'm a Celebrity's definition of celebrity. Plus no hidden fees down under. For teams of all sizes from 1-100.



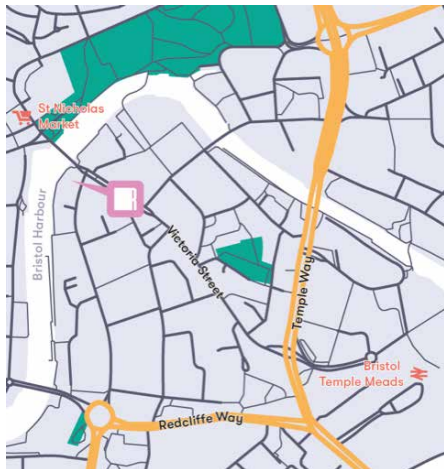
Big Desk Energy

Join other startups, agencies and growing companies in a forward-thinking community that cares about its impact. Be part of something bigger, supported by a growing team (...us) that feels the same. We're big advocates for green energy and greener rewards (like the living wage).



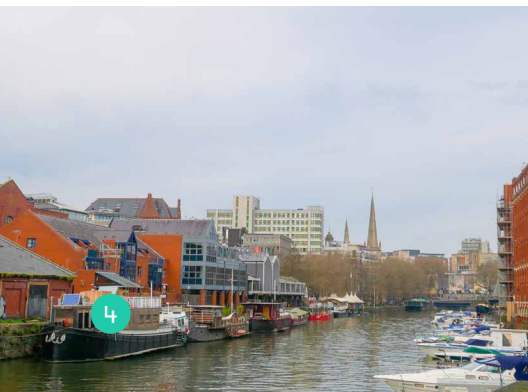


WHERE WE ARE



We're the heartbeat of the high-growth scene in the city and home to some of the best known brands (and young upstarts) in the region.

Plus we're round the corner from some of the best bars and restaurants in the city.



WHAT'S HERE

When you step through the door, you'll have a cold drink in one hand and a puppy in the other.



Honesty cafe & bar
Grab a decent coffee or a cold beer. Go wild. It's for charity.



Roof terrace
With views of Central Bristol.



Easy transport
Just 10 minutes from Temple Meads.



Cake Wednesdays
It's halfway through the week. Here's a tonne of cake.



Drinks trolley
Our famous Friday drinks brought to your desk. Cold. Free. Desk.



Dogs on demand
Hard day? Here's a puppy at your desk. You're welcome.



Free meeting rooms
A bunch of rooms and phone booths for meetings (or karaoke).



On-site dream team
Local experts, champion hype team and always here for you.



Space to unwind
Acres of comfy space to relax, work, breakdance. Take your pick.



Bike storage
Have a bike? You'll love being able to put it somewhere.



Super-fast WiFi
Not a shocker, but here it is anyway. Dedicated lines available.



Fully furnished
You bring people, we'll bring comfy chairs and desks. It's a date.



On-site showers
Ideal for commuters (and people that like showering).



Fully serviced
All cleaning, printing and faffing included. Bliss.



Funky office add-ons
Neon sign? Ball pit? In-office espresso? Drinks fridge? You name it.

MEMBERSHIPS

We offer a range of plans for teams of virtually any size.



Private Office

A lockable, private office

- 👤 Suitable for teams of up to 29
- 👤 Fully serviced
- 👤 Fully furnished with desks and chairs
- 👤 All membership perks included
- 👤 Flexible agreements
- ⚙️ Customisation available



Private Office Plus

Enhanced customisation options

- 👤 Suitable for larger teams
- 👤 Fully serviced
- 👤 Fully furnished with desks and chairs
- 👤 All membership perks included
- 👤 Flexible agreements
- ⚙️ Advanced customisation options



Dedicated Desk

A fixed desk in a shared office

- 👤 Individuals and small teams
- 👤 Fully serviced
- 👤 Fully furnished with desks and chairs
- 👤 All membership perks included
- 👤 Flexible agreements

All our members get:

- 👤 Access to rooms and phone booths for meetings (or karaoke)
- 👤 A faff-free environment (think utilities, printing, cake, dog cuddles. We'll sort it)
- 👤 Membership plans as flexible as I'm a Celebrity's definition of a celebrity
- 👤 No hidden fees down under

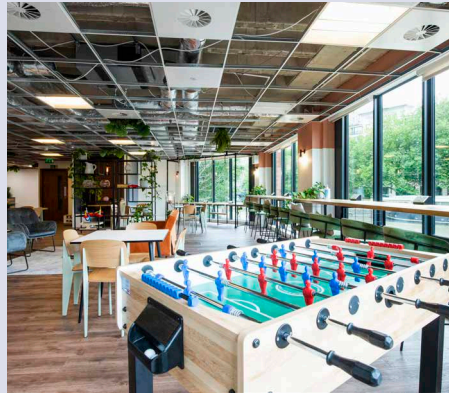


HIGHLIGHTS



ROOFTOP TERRACE

Bask in the sun (most of the time) with our large rooftop terrace overlooking central Bristol.



CAFE AND BAR

Coffee snob? People watcher? Settle in and relax at our bright and vibrant breakout space and café.





CUSTOMISE YOUR OFFICE

From simple logos to custom murals, we've seen – and done – it all. We want your office to feel like your home.

- Lockers
- Plants
- Tech
- Branding
- Fridges
- Painting
- Furniture
- Tea Points
- Meeting Rooms
- Call Booths



Chat to our membership team about giving your space some razzle dazzle.

WORD ON THE STREET



We've tried everyone else, and we prefer us.
So do thousands of our members.

500
startups



Here's why...

"There's just something about the place that just feels right."

Duncan Cheatle
CEO & Co-Founder
Learn AMP



"We couldn't recommend Runway East more."

Michael Langguth
Co-Founder and COO
POQ



"We couldn't be happier with our choice."

Marcus Exall
Director
Monese



"Runway massively amplifies your company culture."

Tom Woollard
CEO & Co-Founder
Bunk



"It's completely revolutionised our business. It's given us the room to grow. It's all been such an incredible experience."

Tom
Director
Lumenate



"It generally makes coming into work that little bit more fun."

SR2



"The staff are incredibly supportive, they're so friendly."

PerformanceIN



"Really pleased that we moved here. Highly recommended."

Kate Boulton
General Manager
Unbound



"The most social place I've ever worked."

Paul Wiseall
Co-Founder
Death.io



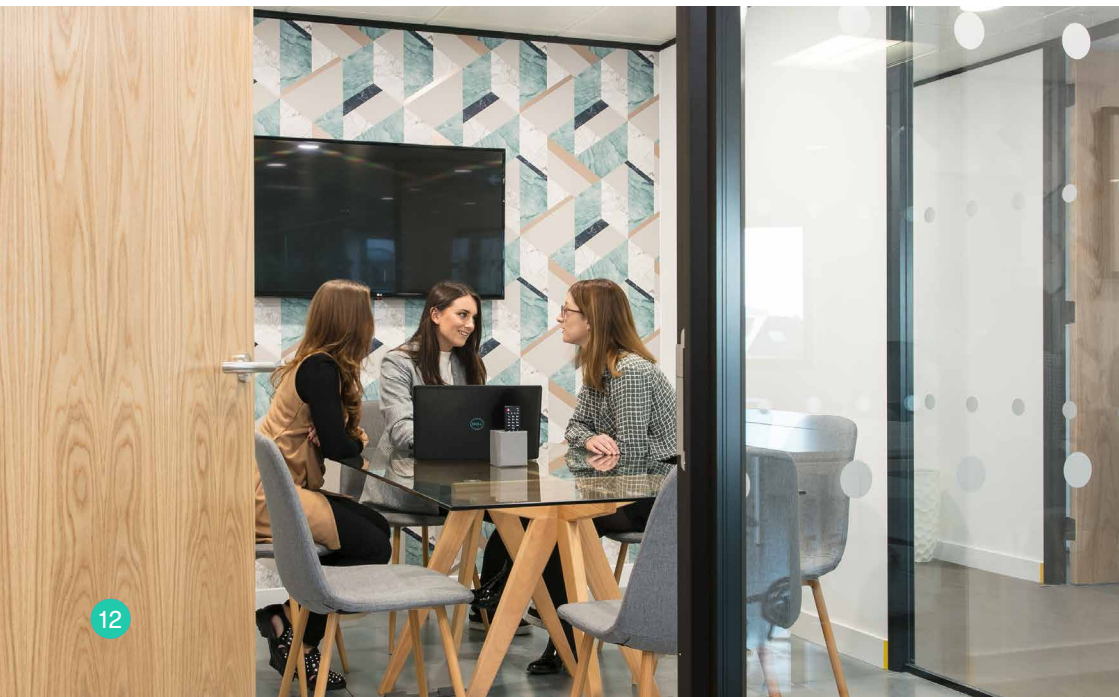
"Runway East is our spiritual (and actual) home."

Joe Cripps
Managing Director
Trail



"Runway East is the best place to scale a business."

Gareth Williams
Founder
YellowDog



FAQS

The Building

Can Runway East accommodate technical requests like on-site servers?

Yes, Runway East can accommodate a wide variety of technical requests including secure on-site servers, though there may be additional fees.

Do you host events?

Yes, we host a wide variety of regular professional and social events.

Am I allowed as many people as I want in my office?

Each office comes with a capacity restriction, sadly. But you're welcome to have as many guests in as you like.

How many other people will be in the building?

There will be almost 600 across the whole building.

Your Membership

How flexible is flexible?

Standard pricing for private offices is based on 12-month minimum term. We offer lots of flexible options on longer terms, too.

Are there any hidden fees we should be aware of?

All options come fully furnished with desks and chairs and fully serviced; all broadband, utilities, printing, tea, coffee, water etc are included in your price. The only additional fees would be if you requested that we customised your office with break out furniture, branding etc, or if you went over the very generous meeting room coins.

What are the membership criteria?

Any business can join, but we do make sure that they're aligned with the casual and relaxed atmosphere of our sites. Very formal, quiet businesses may not find us best suited to their needs!

The Area

How easy will it be for my team to get to work?

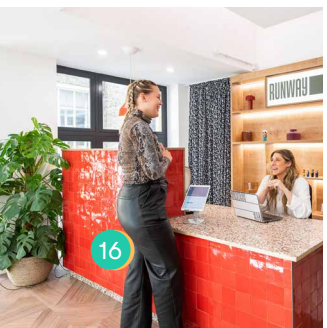
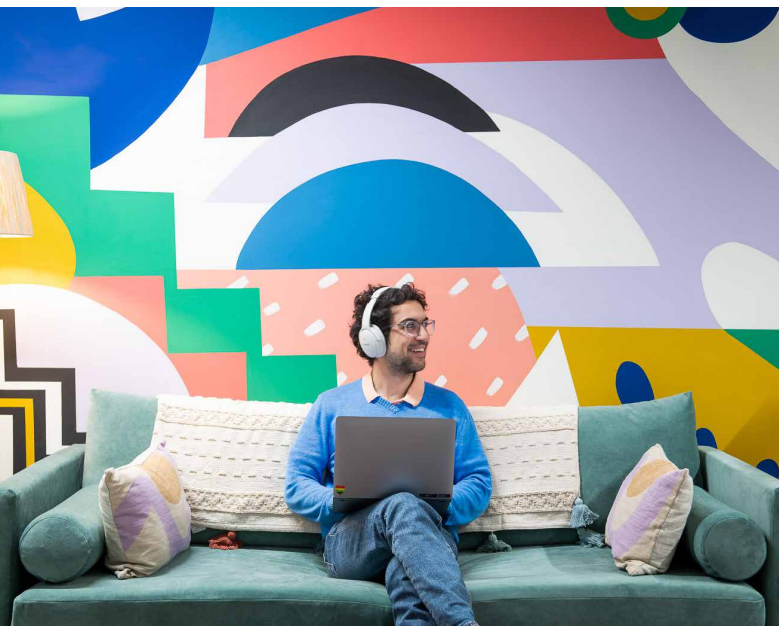
We're a 12-minute walk from Temple Meads station and 15 mins from Bristol Coach station. There's a number of local buses that stop nearby as well.

Where can I keep fit?

There are gyms and yoga studios galore, all within 10-mins of our building. Workout Harbourside, PureGym and Synergi Training Centre are your nearest gyms, while Pacific Yoga and Wild Wolves Yoga are within 5 mins away. Just ask us for our full list of recommendations.

Any places nearby for team outings?

Well that depends what you're after. Need help organising an epic team event? We can help. Or fancy a catered team meeting on site? We have a bunch of rooms of all sizes and can bring a delicious lunch to your room. But if it's off-site you're after, we love pizza and bowling at The Lanes. While The Apple and the Left-handed Giant are always good options for a drink. For a nice lunch, Three Brothers Burgers is a must visit, and of course Finzels Reach Market and Temple Quay Market are always a good shout.



SOLD?

WE'RE

1 Victoria St
Redcliffe
Bristol
BS1 6AA



HERE

✉ membership@runwayea.st

☎ 020 3137 9953

📷 [runway_east](#)

📍 [runway-east](#)

**RUNWAY
EAST**
runwayea.st

Scan for more info!

